

Sincron TS

PULLING OVER- LASTING MACHINES



New generation of computer controlled pulling over lasting machines with programmable electric drivers, an icon of the sector, with a touchscreen computer system for a 360 ° control of the machine's functions. Particularly suitable for high-end production thanks to the sophistication of the movements.

ATOM





PINCERS

9 servo-assisted pincers, in pulling and positioning, with quick-change blocking parts. The pressure of pincers' closure is carried out by proportional valves with values that can be set on screen.



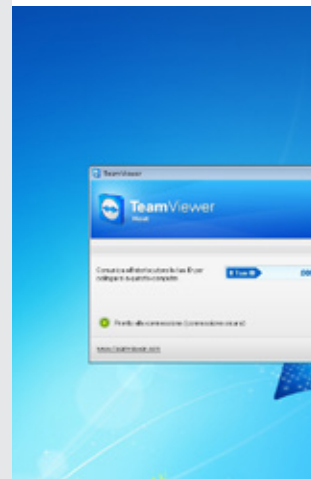
CEMENT DISTRIBUTION

Exclusive and tested system of the cement distribution, through programmable nozzles from the toe to the waist or, simply pressing a button, the mixed system with the crown in the toe and the nozzles for the ball and waist.



ERGONOMIC SETTINGS

Touchscreen that can be set by the operator with the main functions, choice of the manipulators position for the pincers' manual pulling, wide inner accessibility to facilitate the maintenance interventions.



REMOTE ASSISTANCE

Possibility of remote assistance by Teleservice, for a quick and immediate technical support.

TECHNICAL DATA

MODELS	VOLTAGE (V)	MAX. ABSORPTION (kW)	AIR CONSUMPT. (l/min)	NOISE EMISSION (dBA)	FREQUENCY (Hz)	SIZES (mm)	WEIGHT (Kg)
Sincron TS	400 (3Ph+N+PE)	2,5	200	74,2	50/60	1550x1910x1900	1100

Subject to change without notice - January 2018 edition

ATOM



ATOM MB

ATOM MB s.r.l. Viale Industria, 213/5 - 27029 Vigevano - PV - Italy - T +39 0381 345015 - info@atom-mb.it - www.atom-mb.it